

# The race to a Digitalization Future

Gert Bravenboer

Managing Director Siemens Digital Factory and Process Industries & Drives



**SPEEDFACTORY**

**SIEMENS** Digital Enterprise Suite

ALONE I JUMP,  
TOGETHER WE SOAR.





SAFETY

做好中英友谊和  
Afine the China-Ethiopia Friendship



# Today's challenges in F&B packaging industry



**Flexible production  
capabilities**



**High cost pressure**



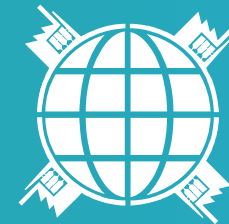
**Fast changing consumer  
demands**



**Global and regional  
regulatory compliancy**



**Increasing variety of  
products and recipes**

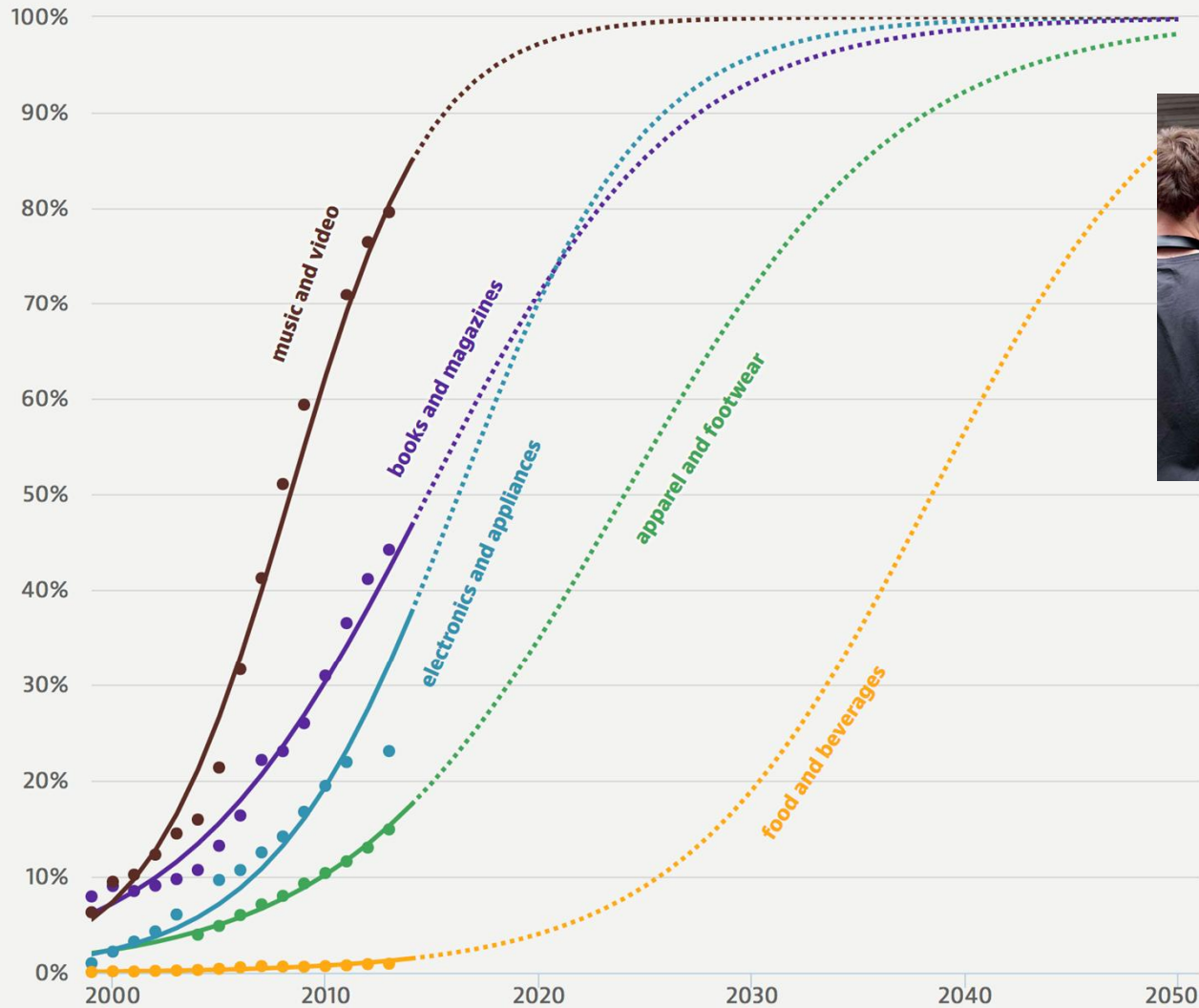


**Global setup – Distributed  
plants**

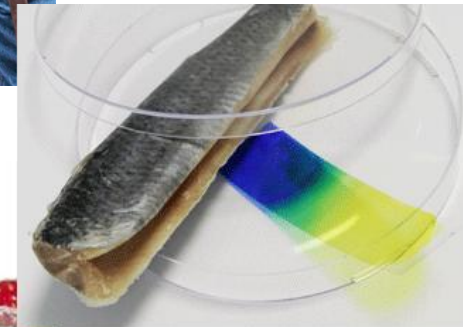
# Customer experience increasingly important

**SIEMENS**  
Ingenuity for life

E-commerce share



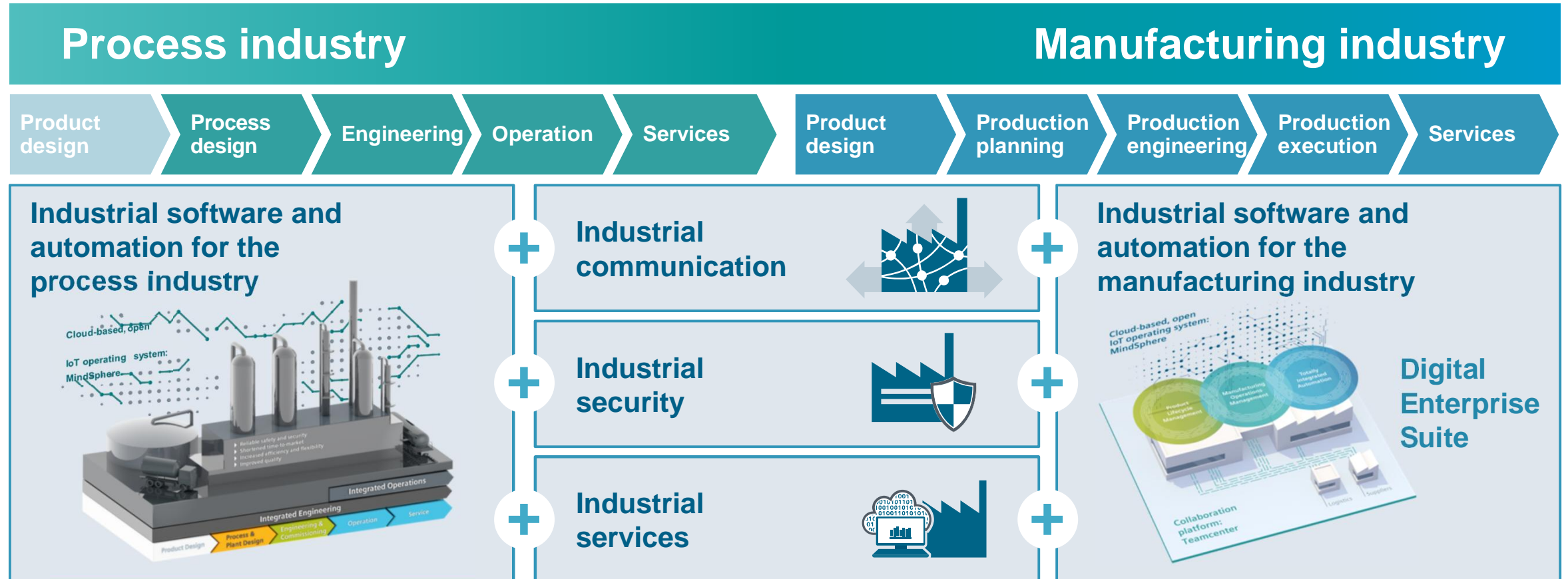
Unrestricted © Siemens AG 2018



# Digital Enterprise is our portfolio of solutions for digital transformation in the manufacturing and process industries



## Digital Enterprise





# Simulation solutions are the prerequisite for flexibility in design, in production, and for process optimization

**SIEMENS**  
*Ingenuity for Life*

MindSphere

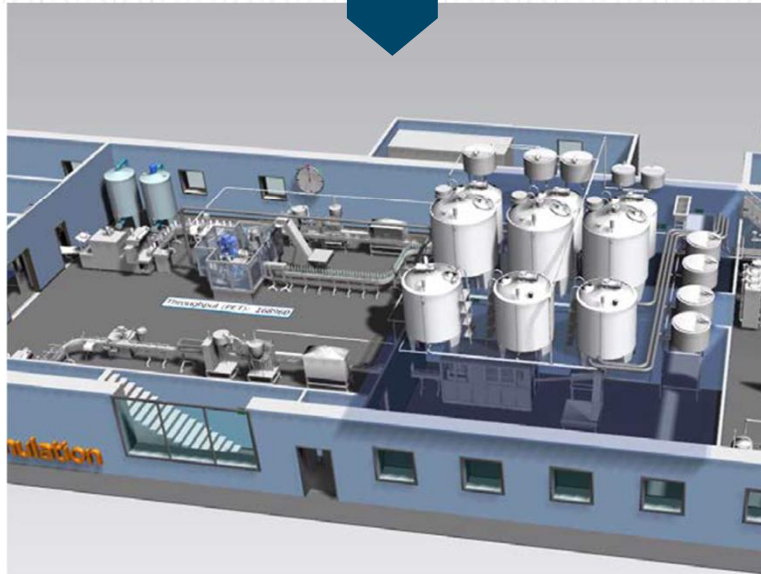
feed back insights to continuously optimize product and production



Packaging



Formulation

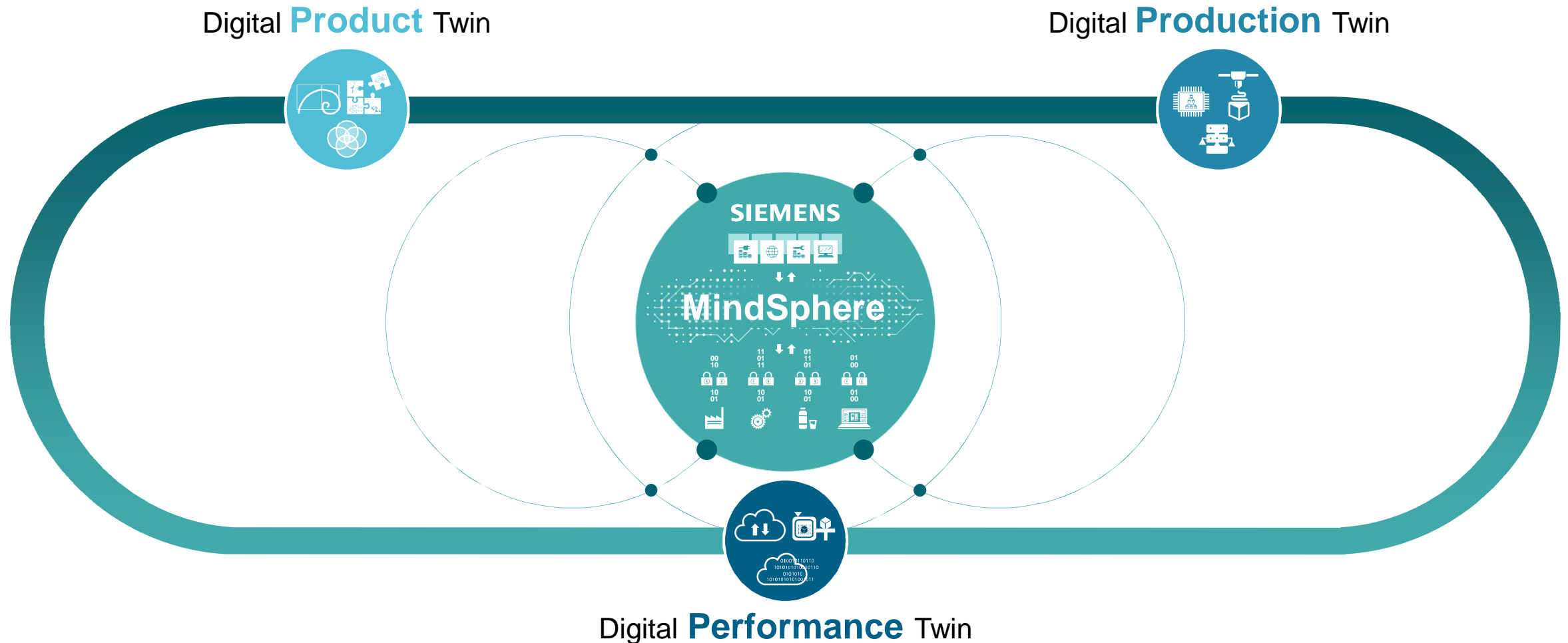


Digital Twin of  
the product

Digital Twin of  
the production

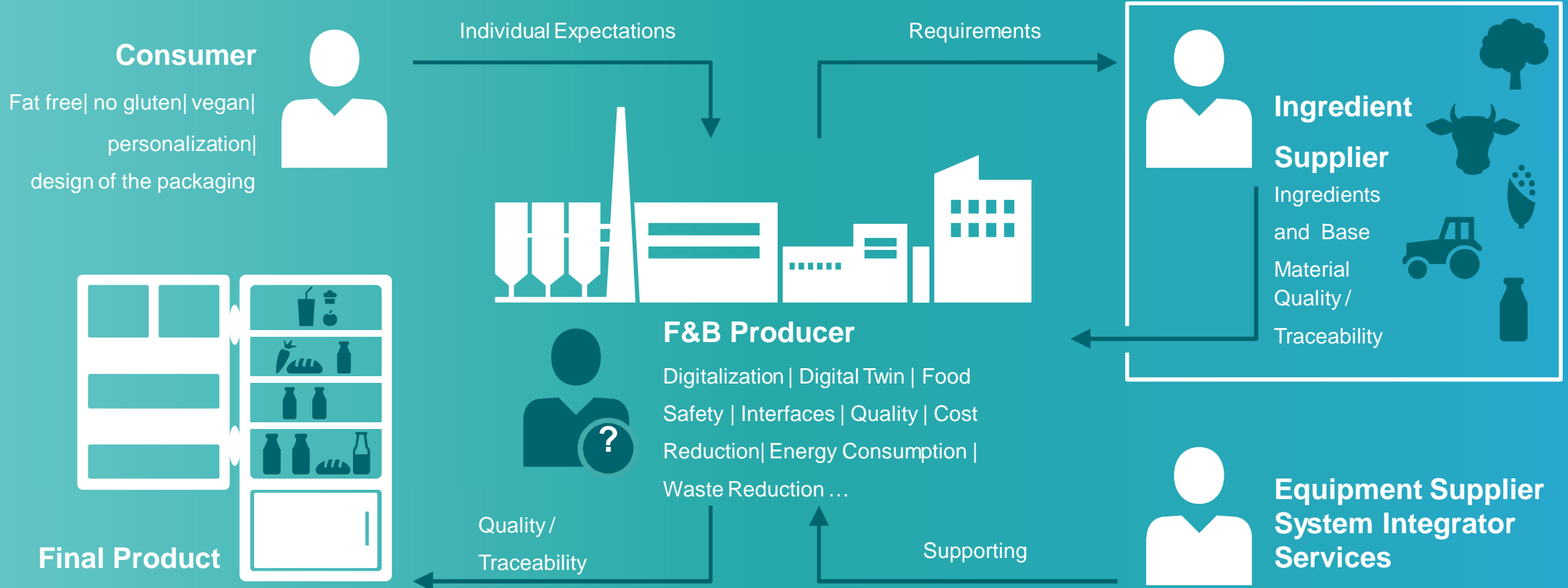
Digital Twin of  
the performance

# The digital twin creates the conditions for flexibility in product design, in production and product performance





# Flexibility in mass-production „from the field to the consumer“



# Thank you!

**Gert Bravenboer**

Directeur

Siemens Nederland N.V.

Digital Factory & Process Industries and Drives

Prinses Beatrixlaan 800

2595 BN Den Haag, Nederland

Tel.: +31 70 333 3130

Mob: +31 6 53461181

<mailto:gert.bravenboer@siemens.com>

[www.siemens.nl](http://www.siemens.nl)

[www.siemens.com/ingenuityforlife](http://www.siemens.com/ingenuityforlife)